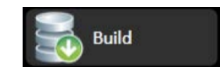


Running Projects

Running FactoryStudio Projects



The Run environment provides access to all Project execution features. From the Main Menu, click on the "Run" icon and, then, on the "Build" icon.



Build recompiles all displays and scripts for final verification before deploying a project for production. Build provides a complete verification of the application logics when preparing for final production, but is not necessary during development as all modifications in the project are automatically and transparently being compiled in the background while you are editing. The Build selection has two information tables:

Messages

History

Last build: 39

executed on: 10/13/2011 12:08:06 PM

Build

☒ Pack database after build

☐ Save all displays when building

Status messages:

Drag a column header here to group by that column.

Module	Object ID	BuildStatus	BuildErrors	Location
Script	Class.ClientMain		none	
Script	Class.ClientMain		none	
Script	Class.Navigation		none	
Display	MainPage		none	
Display	SelectPage		none	
Display	LogOn		none	
Display	Header		none	

Messages show current status of each script and display regarding potential error or warnings on the logic.

History shows how many times you executed a whole build to this project.

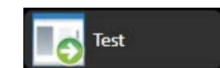
It not necessary to execute the Build command when editing the project, that happens in background. Only do a Build as a final verification before putting in production, or to create a Build Number for versioning.

On this page

- [Running FactoryStudio Projects](#)
 - [Test and Startup the Project](#)
 - [Running the Project](#)
 - [Publishing Your Project](#)

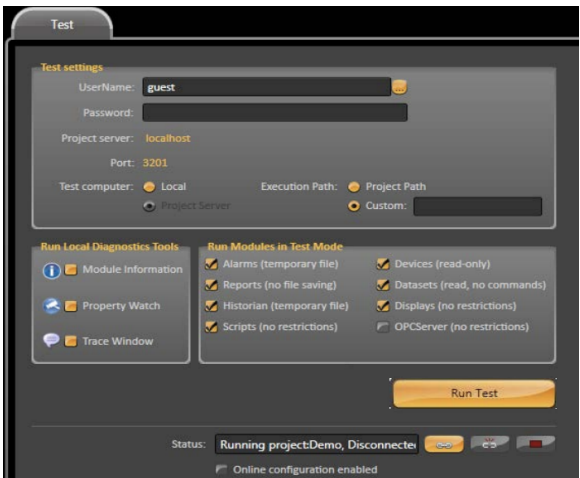
More on the QuickStartGuide

Test and Startup the Project

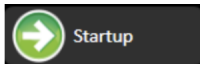


Test lets you run the project in test mode, which means enabling protections that allow it to run even on the same machine that the project is running in startup. The Historian and Alarm logging functions are directed to use temporary files instead of the defined database for the project production.

Optionally you can enable diagnostic tools to help resolve any issues you may be working through. You can also decide to disable any of the FactoryStudio modules during your test.



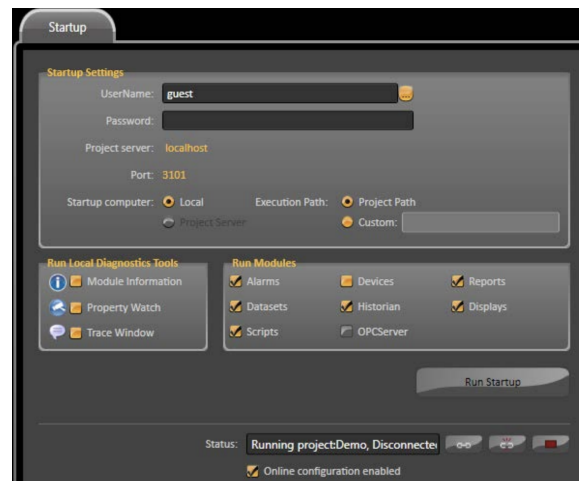
Running the Project



Startup is where you configure how your project will run in production mode. This means enabling the Historian and Alarm logging functions to use databases as defined in the project instead of the temporary files used in Test.

Optionally you can enable diagnostic tools to help resolve any issues you may be working through. You can also decide to disable any of the FactoryStudio modules during your test.

The Online Configuration checkbox allows you to establish on-line configuration. When the Project is running you can attach to the execution, which means modifications to the project we be shown in the running project when made.



Publishing Your Project

Click on the Publish icon.

Publish creates a read-only protected version of project suitable for deploying in the field.

When the Publish command is executed a new Project file (with extension ".teng") is created with the version number selected. The Published Projects (".tproj" extensions) are similar to the current project (".proj" extension) and can be opened only in read-only mode. This provides you with a safe backup version of published applications.

Note

It is not necessary to publish the project, unless you want to create a read-only protected version of that file. Otherwise you can just copy the project file to the target computer.

