

Multi-Screen Engineering

[Quick video tutorial](#) (no audio)

Overview

The Multi-Screen Engineering tool is also known as *the Multiple Document Interface (MDI)*. MDI stands for a graphical user interface in which multiple windows reside under a single parent window. The *Multi-Screen Engineering* tool is available in two environments: **Draw** and **Scripts**.

MDI is a new engineering environment feature that allows the user to edit multiple displays or scripts at the same time, which makes it easier to copy content between documents, facilitates comparison between different documents, and decreases the switching time between documents that are being edited.



The MDI feature only works along with a properly-working WebServer.

Draw Environment

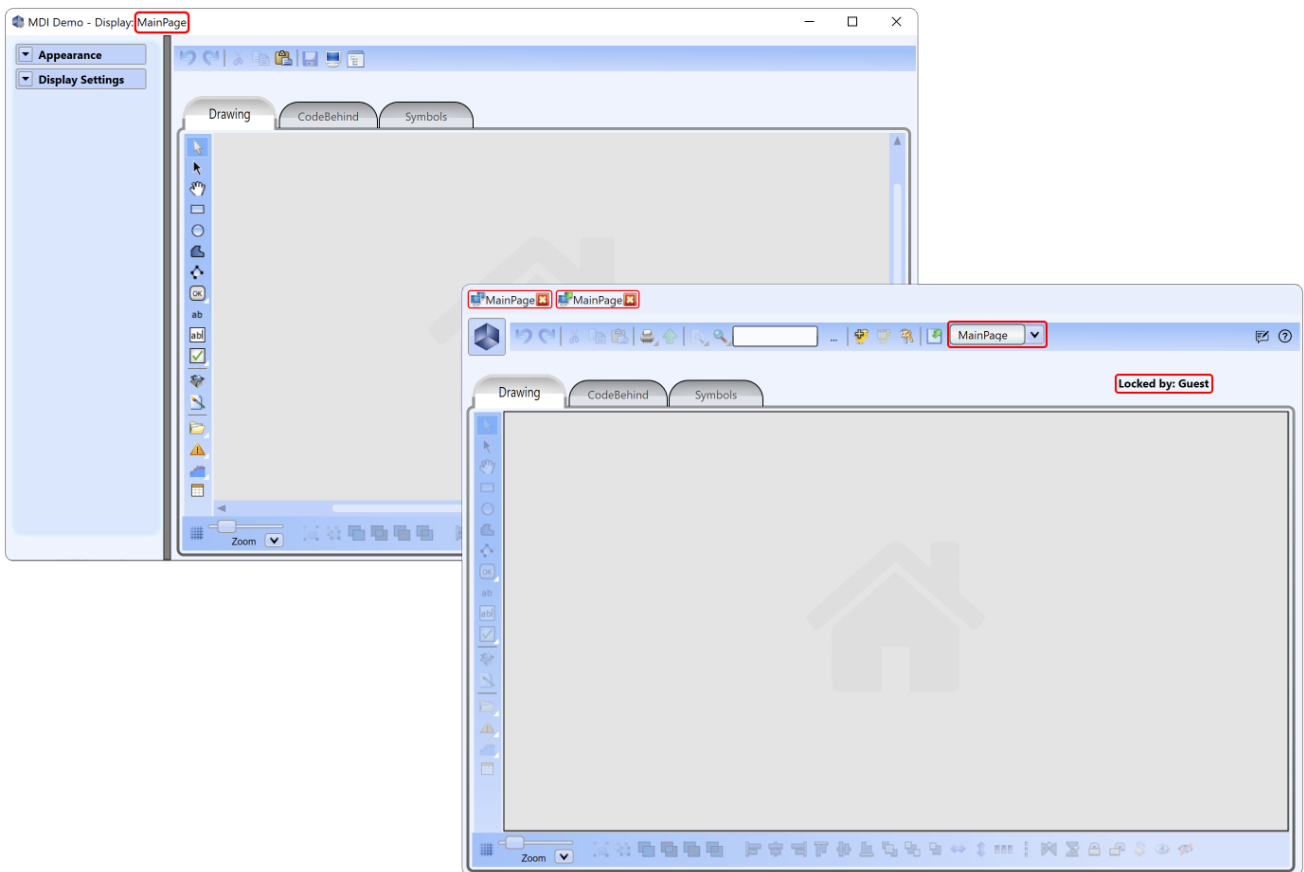
In the Draw Editor tab (*Edit -Draw-Drawing*), the MDI enable button is in the toolbar located at the top of the display.



If the button is not available, close the current project, make sure a WebServer application is running, and launch the project again.

Once this button is clicked, a child window will open and the page will enter a locked state.





In *Edit -Displays-Displays*, you can see which users are editing a page.

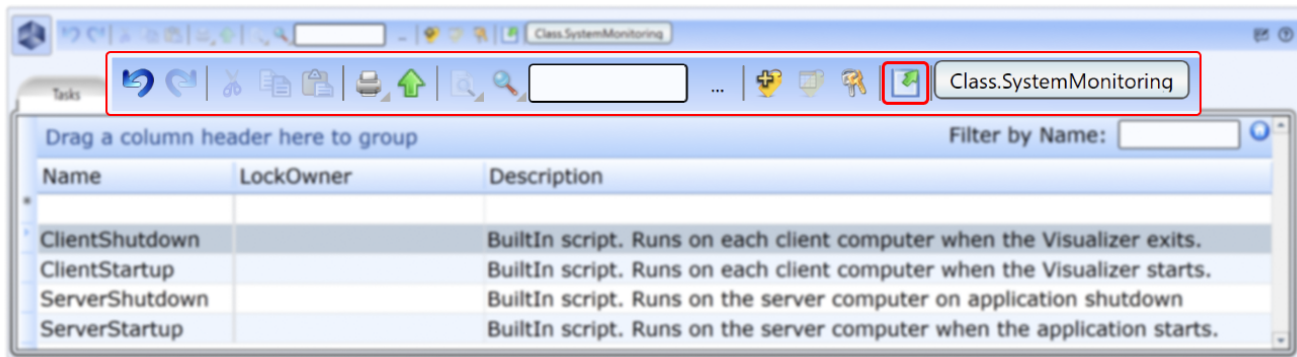
Displays						
Client settings: .NET Clients Number of Monitors: 1 On startup: Monitor 1 Layout.Startup: Filter by Name: Table View						
HTML5 pages iOS devices						
Drag a column header here to group						
Name	Mode	Preview	AllowSelection	RunSecurity	LockOwner	Description
MainPage	Page		✓		Guest	Project home page
SelectPage	Dialog					Selected and navigate to new page
LogOn	Dialog					Security LogOn and LogOff

Scripts Environment

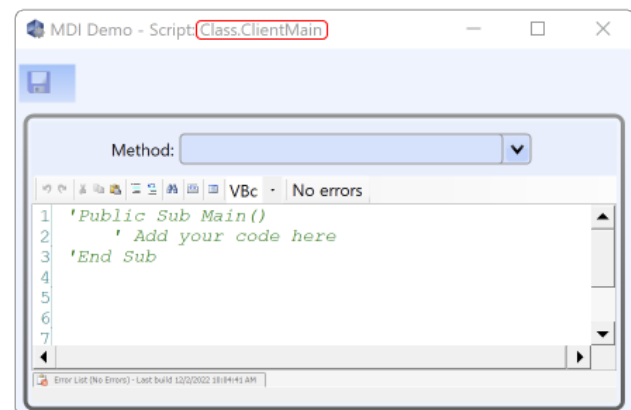
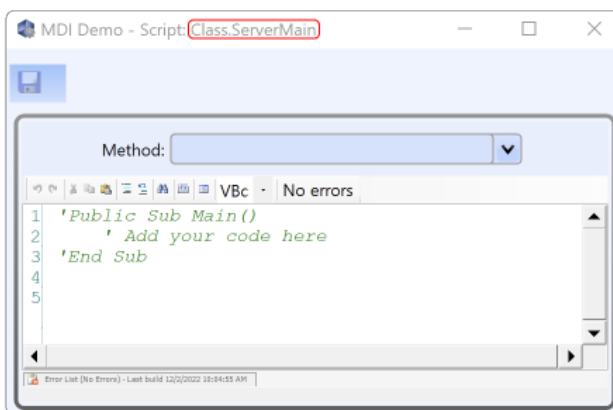
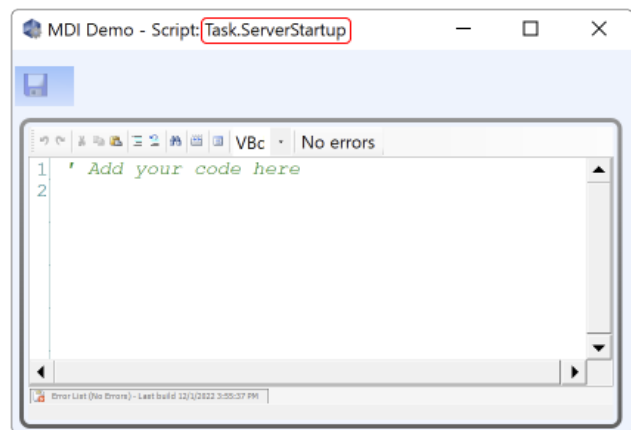
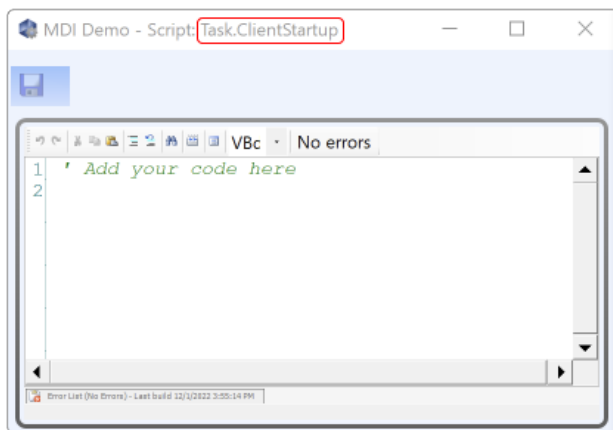
In the Scripts environment (*Edit -Scripts-Tasks/Classes*), the MDI enable button is in the toolbar located on the top of the display.



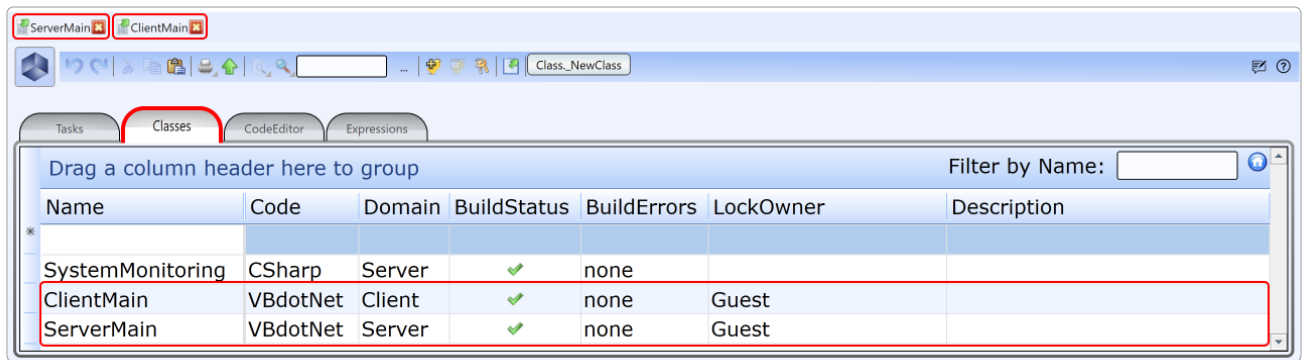
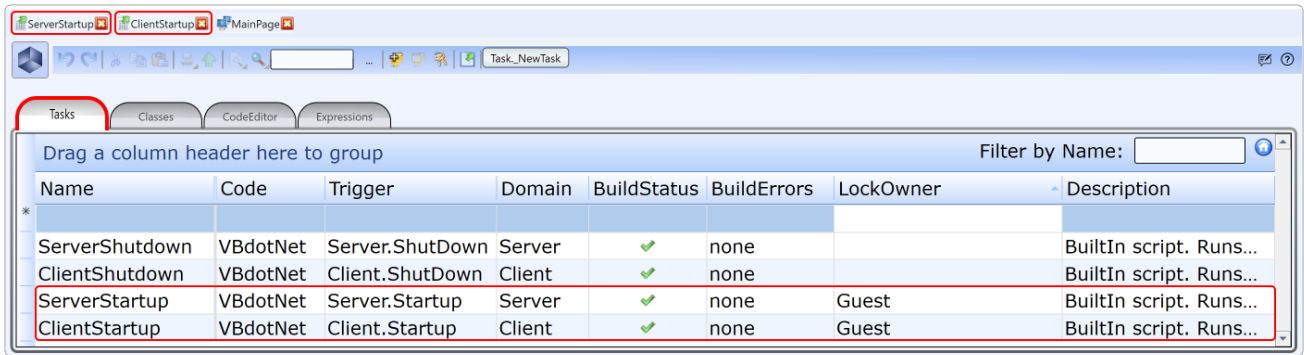
If the button is not available, close the current project, make sure a WebServer application is running, and launch the project again.



Once this button is clicked, a child window will open with the Code Editor environment.



In *Edit -Scripts-Tasks/Classes*, you can see which users are editing a page.



Switch Between Documents

On the project header bar, you can easily navigate through the last opened pages and code editors.

This feature provides easy access to recently used information, enhances user experience, and improves the workflow.

This feature also allows you to close a document that is open in the last document bar.

