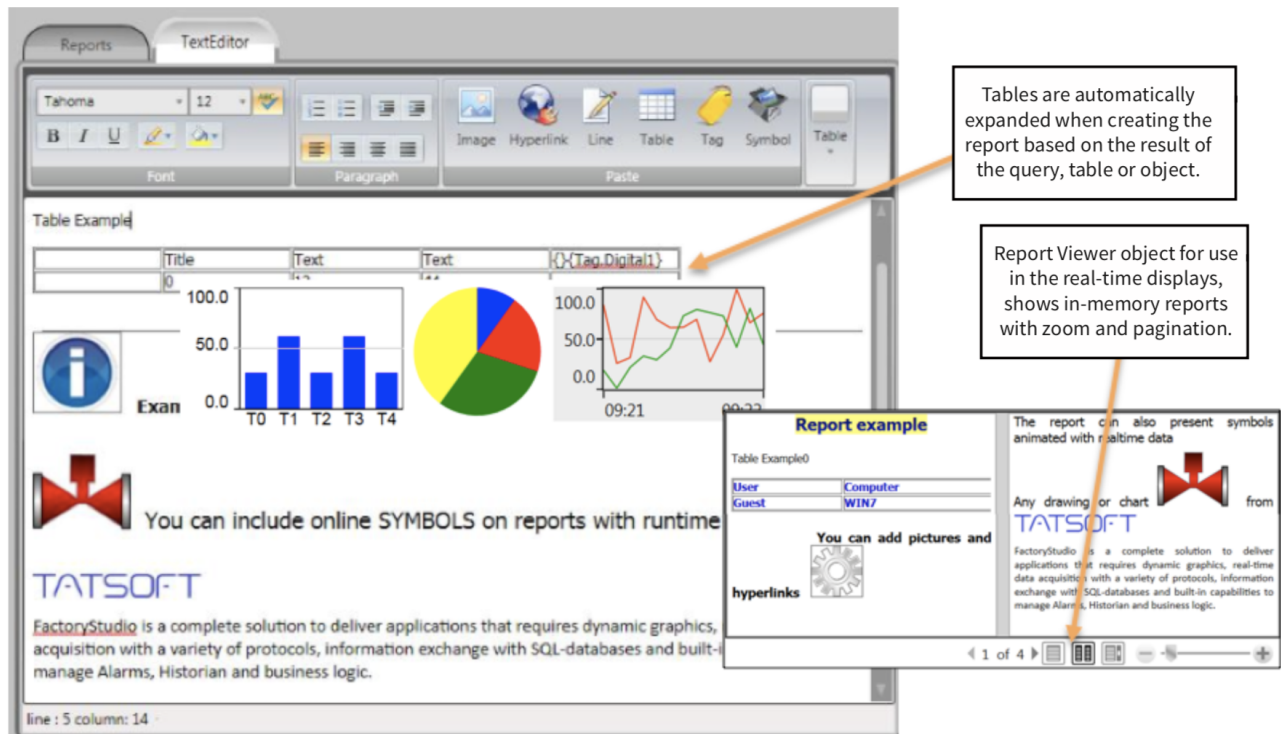


# Reporting and Data Access



## Reporting and Data Access

**FactoryStudio** includes a user-friendly, simple report layout editor integrated within the engineering workspace. The rich text format uses underlying XAML flow document technology from WPF that enables the inclusion of graphics and flexible formatting.

### Runtime Display Snapshots

Runtime displays can be opened in the background or saved to image files, allowing you to create rich graphic snapshot reports. Current displays and layouts can be printed or saved as an image to a disk.

### Report Append and Text Data Logging

The report generator's ability to append files, based on the project configuration and real-time tags, can be used to create CSV and text logging files for scenarios that require information to be created as time goes by, such as batch reports and shift reports.



#### Built-in tools and open interfaces for custom solutions

Reports can be saved in multiple formats: Text (ASCII or Unicode), HTML, XPS, and PDF!



See "[Reports and Data Access](#)" for more information.

## Dynamic Graphical Symbols

Any symbol from real-time displays can be included in a Report. The dynamic behavior of a symbol, such as color, text output, and rotation, are all updated using current tag values when generating a report. User controls, like Trend and Bar charts, can be added as well.

### Tables and Queries

The content of database tables and queries can be added to reports. Query and report generation are executed in isolated processes; they do not interfere with real-time processing.

### Data Access Toolkit

A complete .NET Data Access library is available for the creation of custom reporting solutions or for integration with Microsoft Office, SQL server reporting services, or other vendor tools. A COM model API is also available for use from Excel VBA and JavaScript applications.