

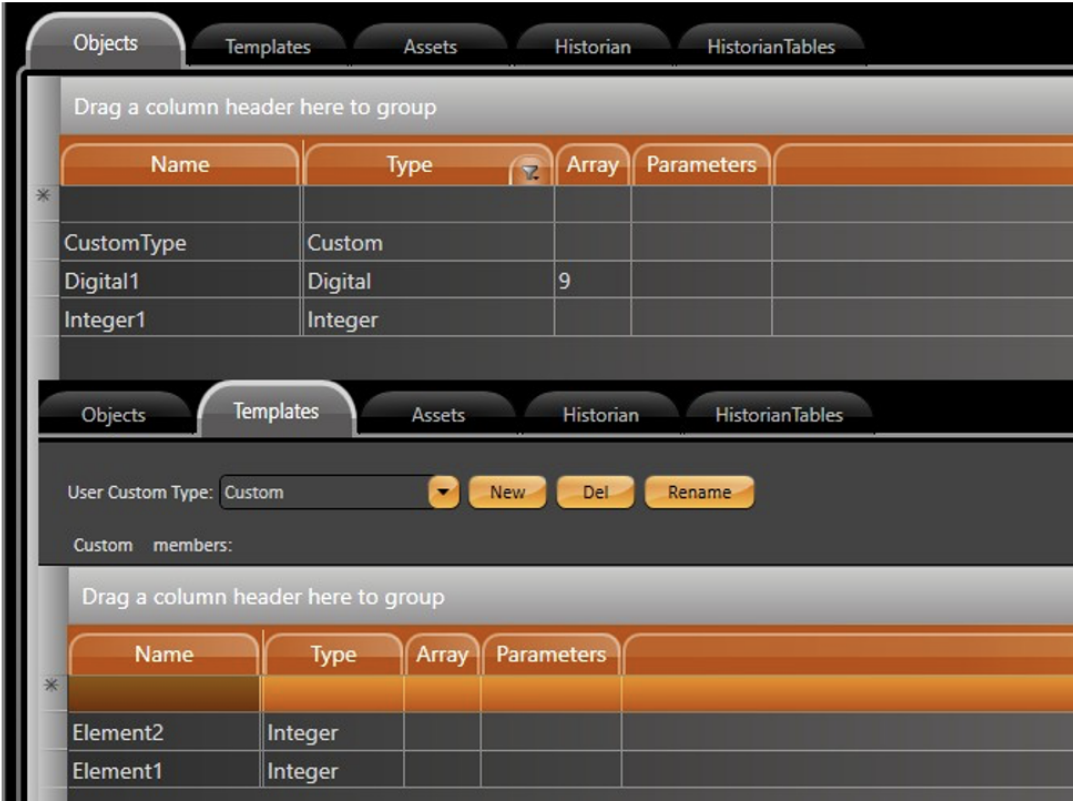
# Copy and Paste Tags

## How To Use

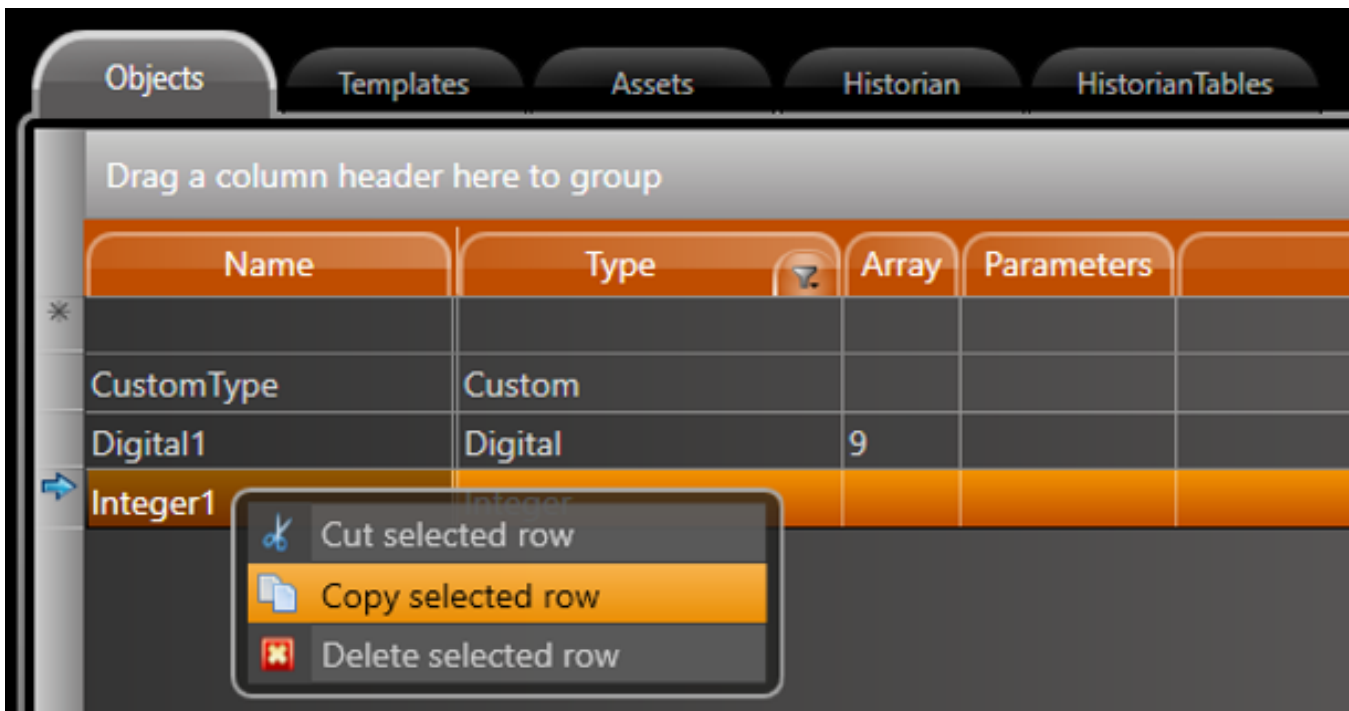
The first step to use this feature is to create a Tag in your **Project**. This tag can be a simple one, an array or Custom Type.

To better understand the feature, three examples are shown below. The tags created are as follows:

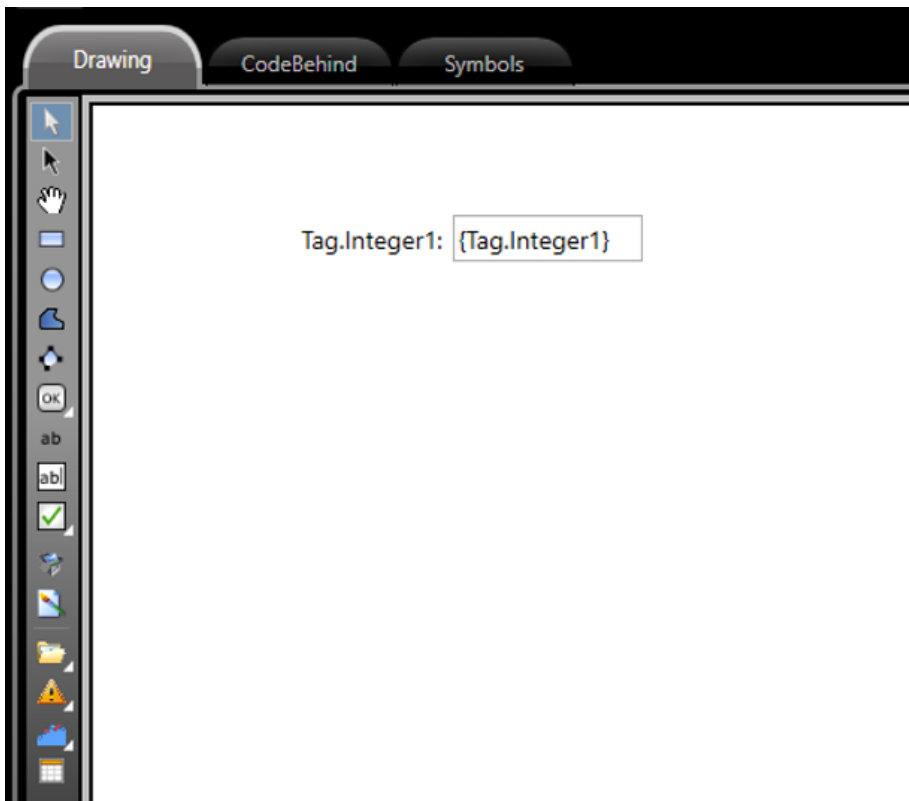
```
1.      Tag.Integer1 -- Integer DataType -- Simple Tag.
2.      Tag.Digital1 -- Digital DataType -- Array of 10 elements.
3.      Tag.CustomType -- Custom DataType
-- Sub-Elements: Element1 (Integer), Element2 (Integer.)
```



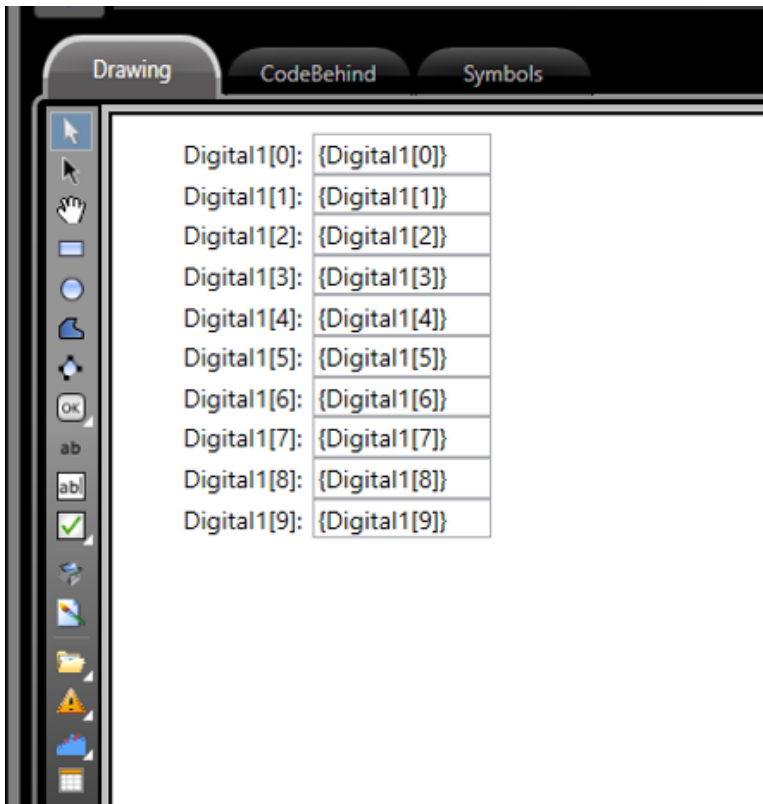
Now that our tags were created, we can start adding them to the display. Right-click at **Integer1** Tag, and select **Copy Selected Row** option.



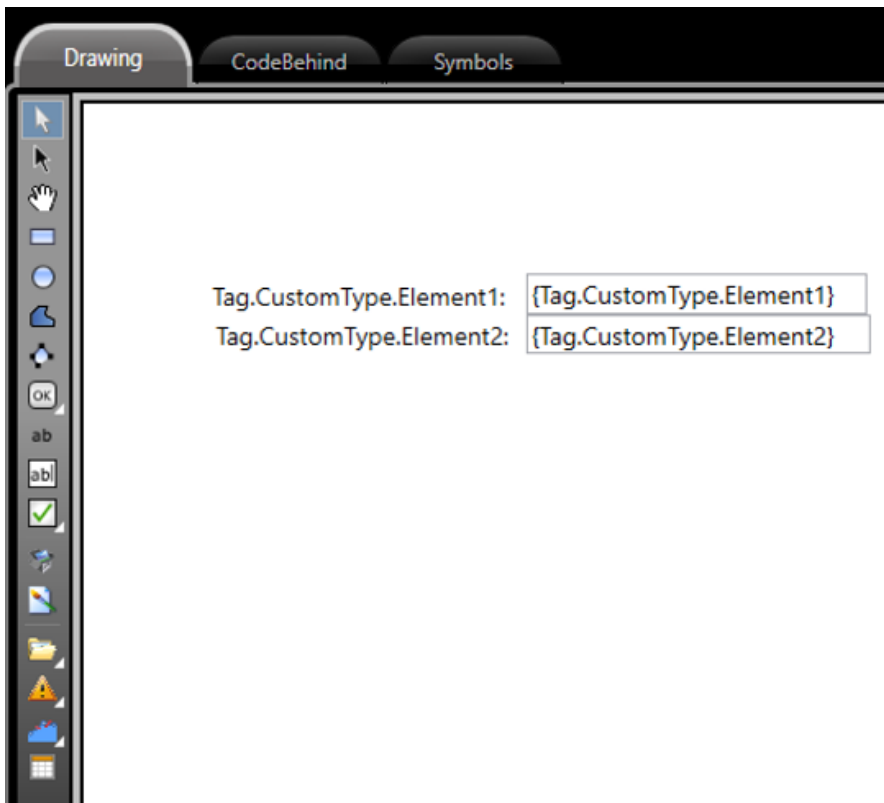
Navigate to the *Draw Environment*, at the desired Page. Right-click at the display and select **Paste**. You should see the Tag being inserted into the display, already formatted with a TextOutput, for label, and a TextBox for displaying value.



The same logic can be applied for array Tags. **Copy** the Tag row from *Edit-Tags-Objects* related to Digital1 Array. All elements should appear formatted when **Pasted** into a page.



Lastly, for a Custom Type Tag, **Copy** the Parent element from *Edit-Tags-Objects* and **Paste** it into your page. The child elements will be automatically formatted at the Display.



# Copy and Paste Tags to Symbols

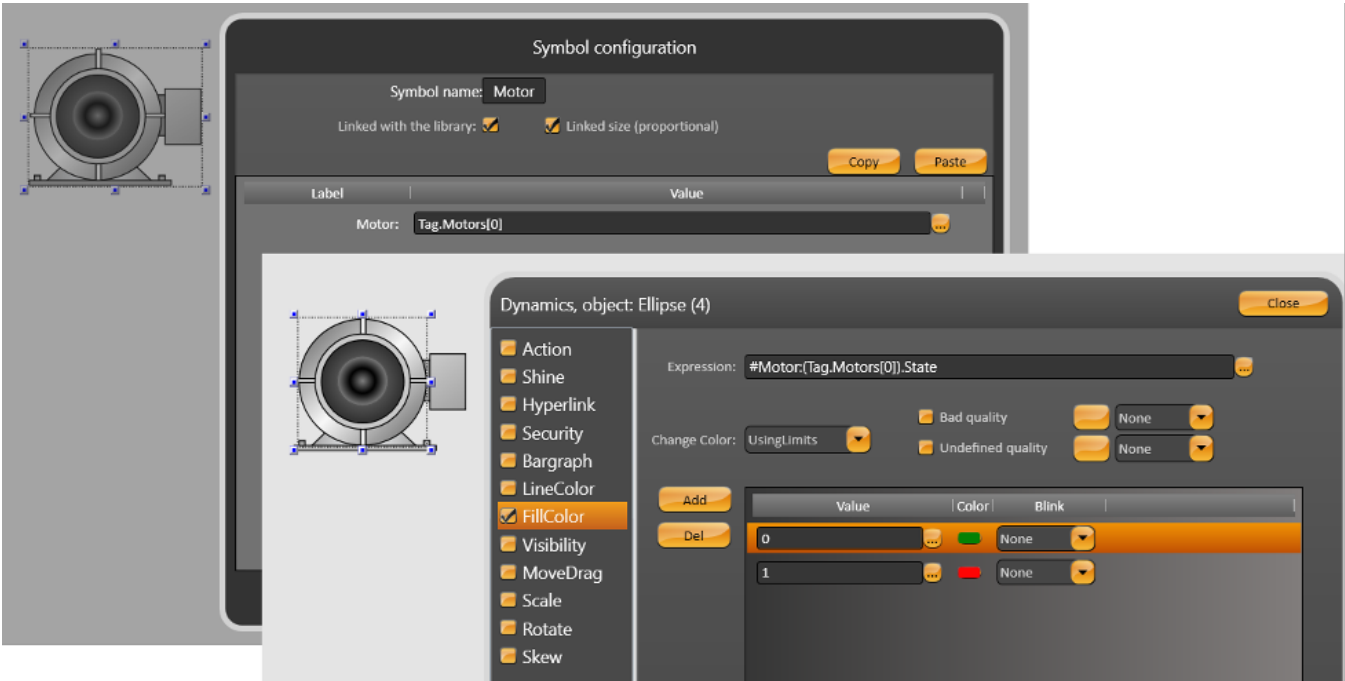
When exists symbol with the same name of custom type, the copy and paste of a tag from this custom type to a page will not paste the tag to a Text Output, it will paste the symbol with the tag already configured.

Example

Custom Type **"Motor"** and tag array Motors for motor type.



Below is the **"Motor"** symbol using the motor custom type:



Executing copy of Motors tag to a page will past all motors symbols created and configured with the right tag:



It is possible execute this operation with custom type inside of custom type with several different custom type at same time.