

Themes

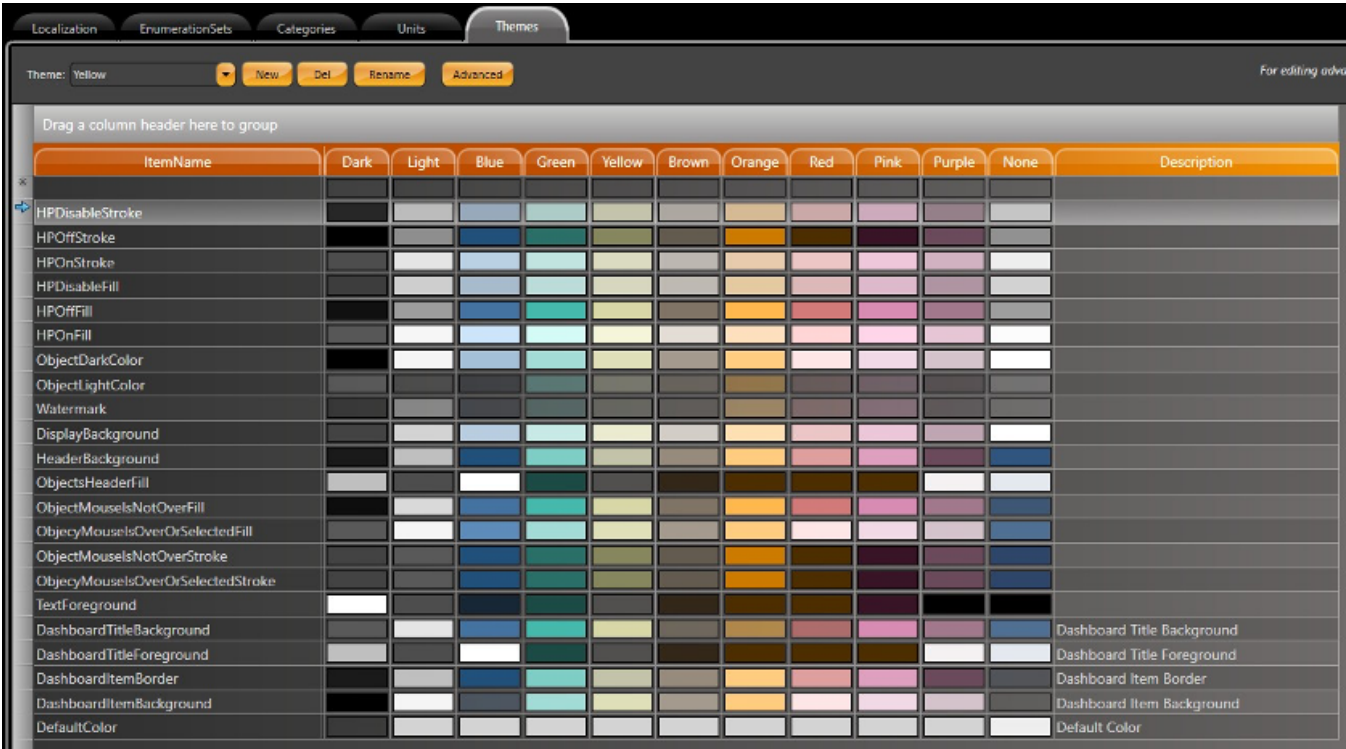
Overview

Quick video tutorial (no audio)

The Themes function allows you to customize the appearance of your display to better suit your **Project**. It is available for *.NET* and *HTML5* Clients.

When you go to *Run-Dictionaries-Themes*, you will find predefined theme palettes that are built into most of the project templates. The Blank Project is the only theme that does not have predefined theme palettes. Themes are completely customizable because you can select whatever color you want for each element in each columns. You can use this method to create your own theme.

The colors and themes displayed in the image below are built into new projects. The *DashBoard*, *HighPerformance* and *Standard* display elements are grouped together in the ItemName column.

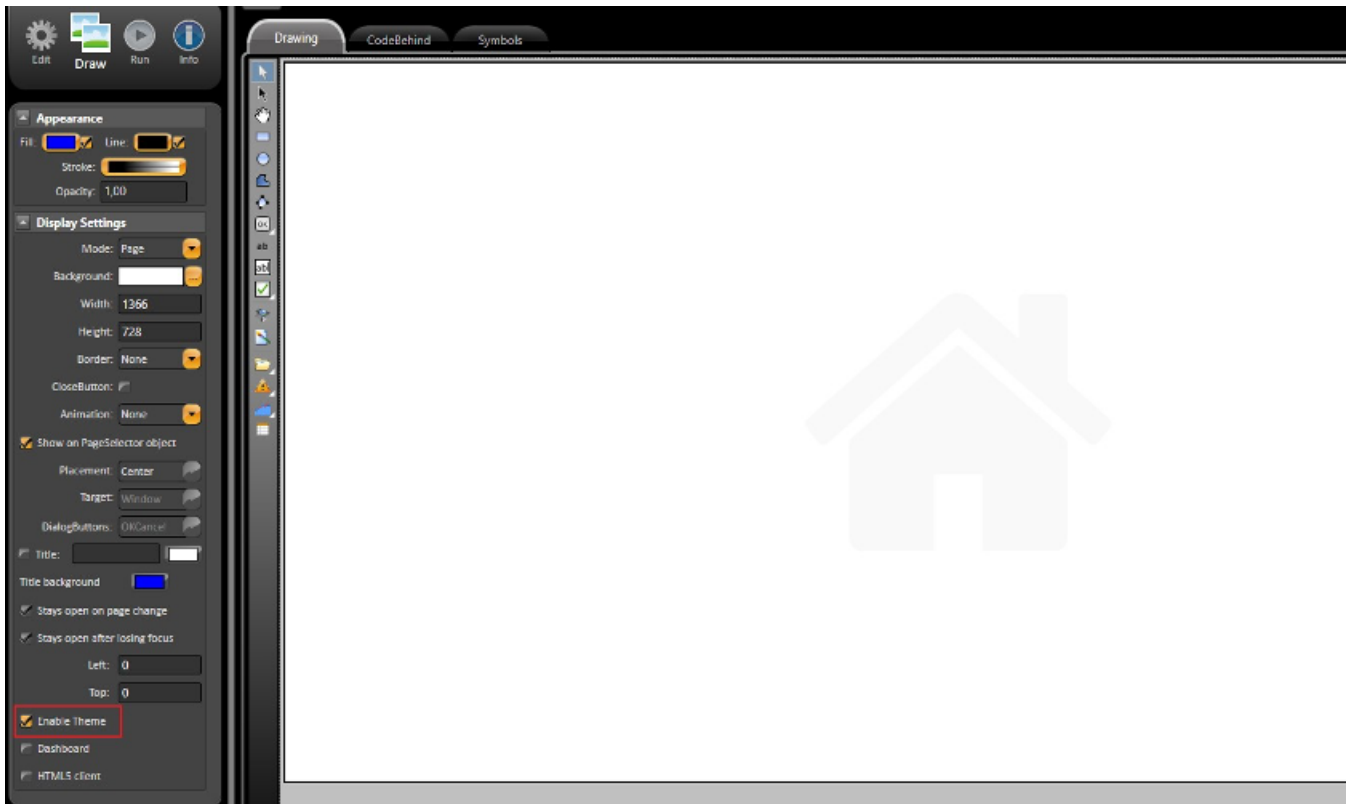


Enabling/Disabling Theme

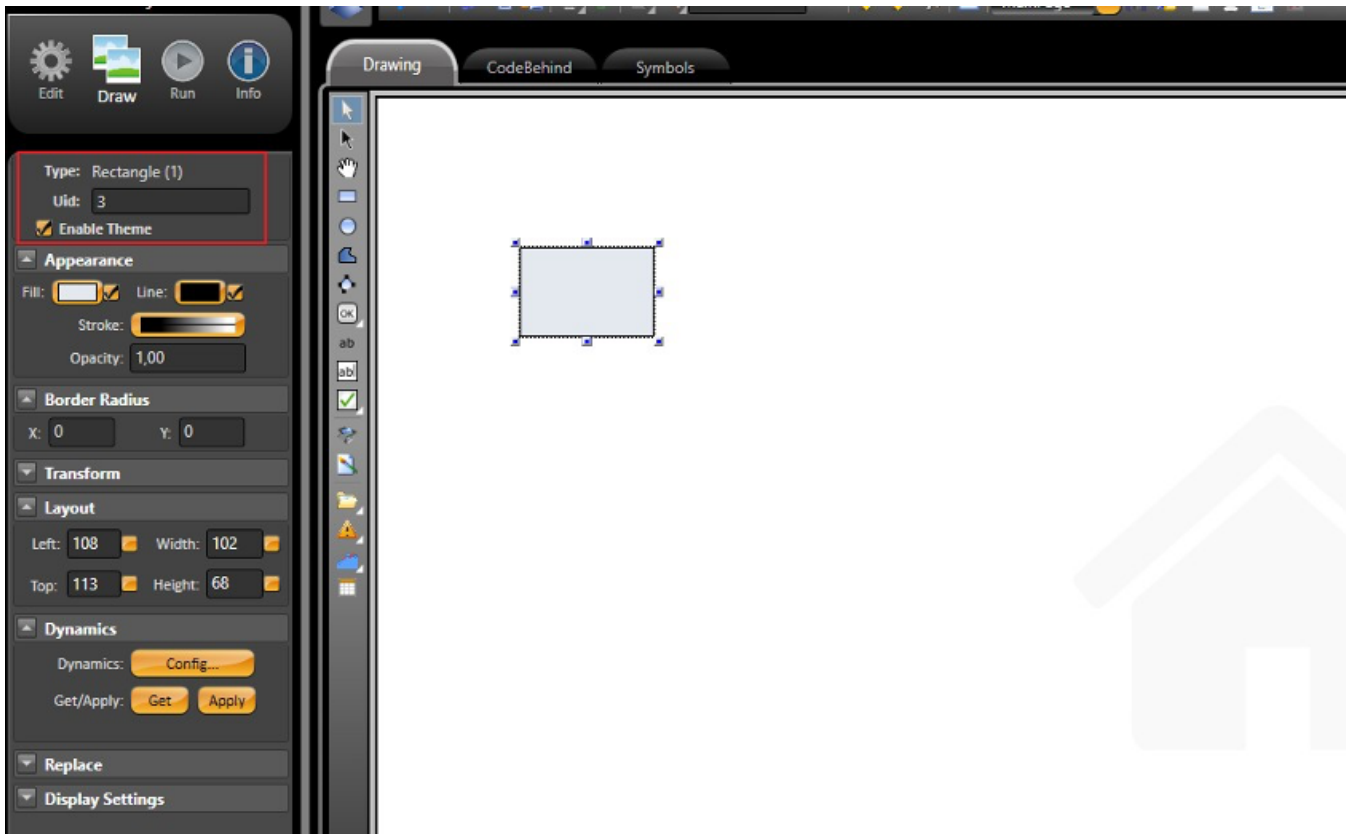
To enable or disable the themes function, navigate to the Draw Editor and click on the checkbox located at bottom of the panel on the left.

When a theme is disabled for an entire page, the theme for every object in the display will also be disabled. The colors will be the predefined colors shown in the image above.

When you change the theme in runtime, the pages and objects will keep their default configured colors.



Individual components will have an Enable/Disable checkbox in the left panel settings.



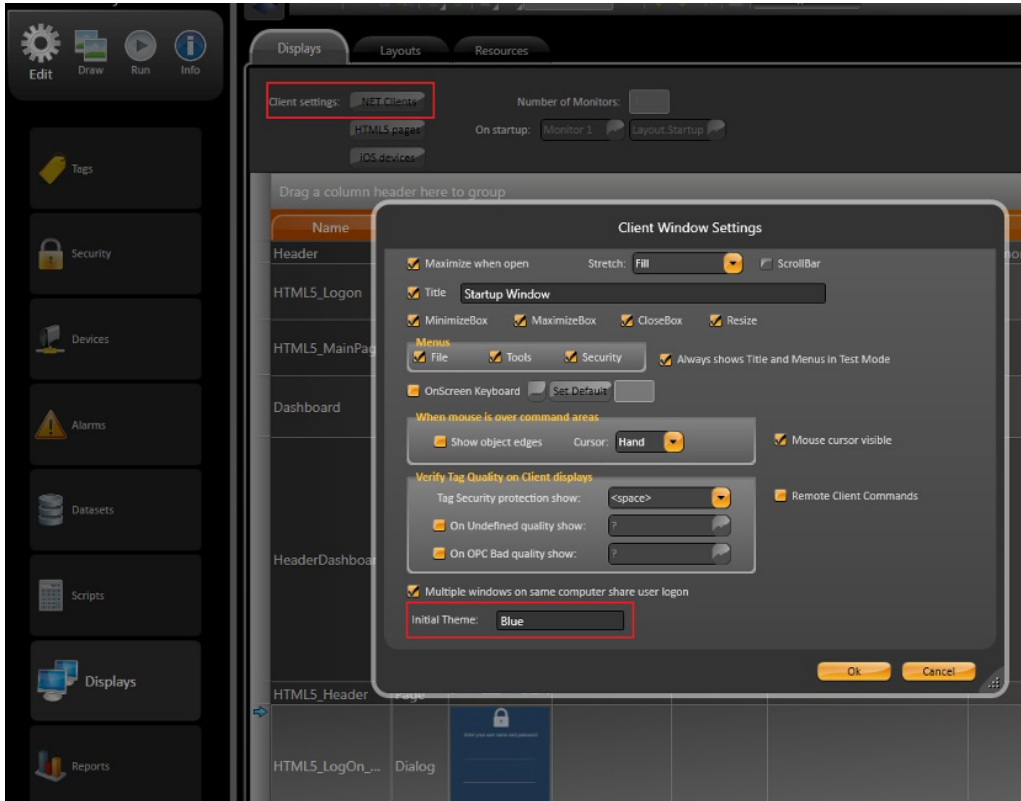
How to Set a Theme

There are a couple different ways in which a theme can be applied to an object or project.

- Startup a Theme in a Project
- Change a Theme in Runtime
- Configure a Palette for an Element in a Page (Rectangle, Button, Textblock, etc)
- Pre-defined Theme and Colors
- Specific Element Properties (Advanced Settings)

Startup a Theme In a Project

In *Edit-Displays-Displays* and under the *.NET Client* settings, you will find an *Initial Theme* textbox. In this field, you can enter the name of whichever theme you want active for the project startup.



Change a Theme in Runtime

Theme selection in runtime can be done by using the syntax below in Script codes, Expression fields, or objects configuration.

To set the project to the default configuration, without a custom theme, you need to set the *Client.Theme* to an empty string (*Client.Theme=""*) or create an empty theme table and assign it to the theme property.

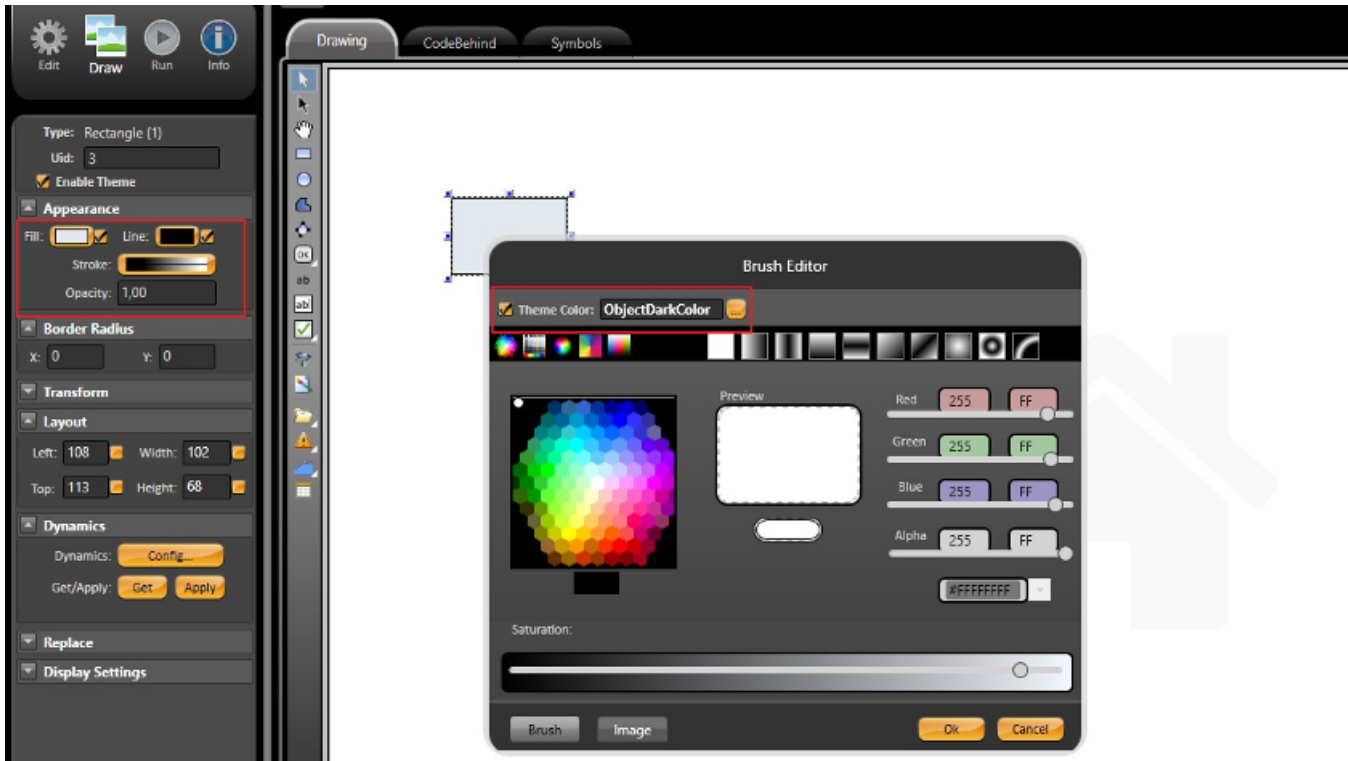
```
@Client.Theme = "Blue";  
@Client.Theme = "Dark";  
@Client.Theme = "Yellow";  
@Client.Theme = "";
```

Configure a Palette for an Element in a Page (Rectangle, Button, Textblock, etc)

To set a theme for an element in the display, you need to open the *Appearance* configuration window located in the left panel toolbar, in *Run-Dictionaries-Themes*.

At the top of the *Appearance* configuration window, you will find a field called *Theme Color*. To select the color you want, you can insert the item name or click on the button and browse through the available ones.

For the most part, this theme color configuration window will be available for all elements that can have their colors changed.



Pre-defined Theme and Colors

When a new project is created, it already contains several built in themes and colors. You can create a new theme with new colors, or you can change the color of the pre-configured theme.

Some important elements that have pre-defined colors:

- DefaultColor
- DisplayBackground
- HeaderBackground
- TextForegroundColor
- All HighPerformance State (all of them start with HP, ex: HPOnStroke, HPOffStroke, HPDisableStroke)
- Dashboard pages (all of them start with Dashboard, ex: DashboardTitleBackground, DashboardItem...)

You can use all the colors in the image below to create whatever color palette you desire.

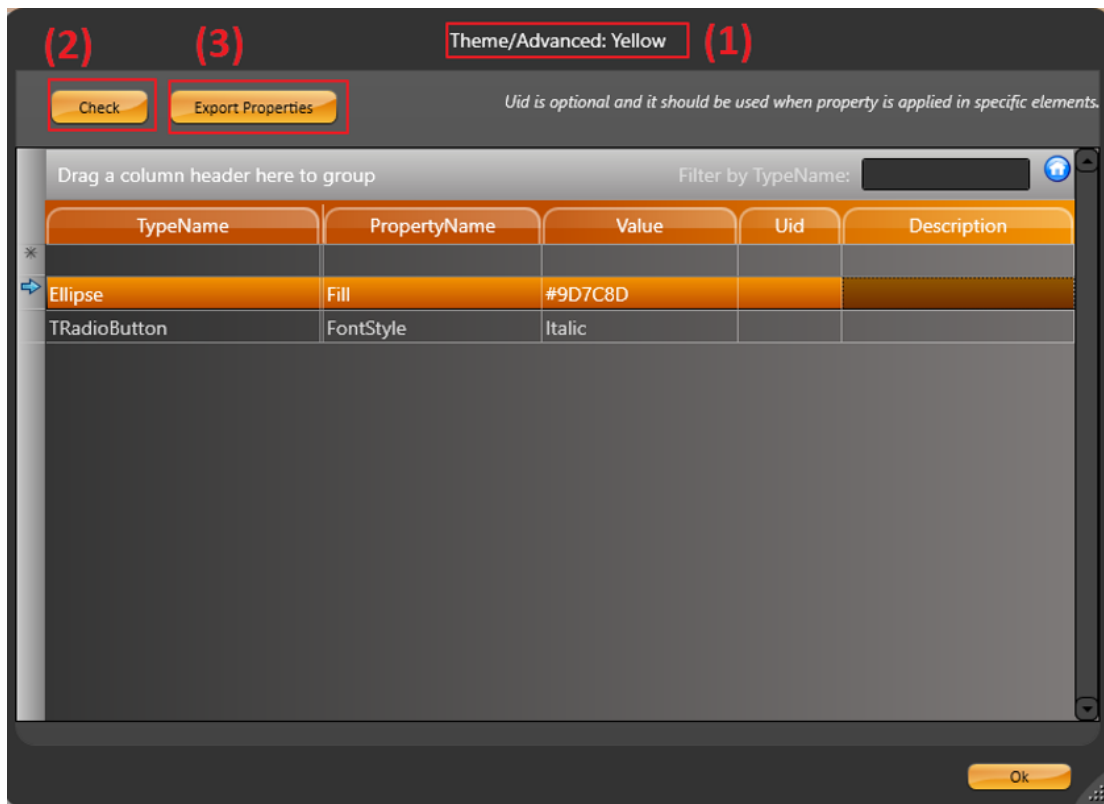
ItemName	None	Dark	Light	Blue	Green	Yellow	Brown	Orange	Red	Pink	Purple
ObjectLightColor											
Watermark											
DashboardTitleBackground											
DashboardTitleForeground											
TextForeground											
ObjecyMouselsOverOrSelectedStroke											
ObjectMouselsNotOverStroke											
ObjectsHeaderFill											
HPOffStroke											
HPDisableStroke											
ObjectMouselsNotOverFill											
HPOffFill											
PanelLateral											
HPDisableFill											
DashboardItemBorder											
HeaderBackground											
HPOnStroke											
DisplayBackground											
HPOnFill											
DashboardItemBackground											
ObjecyMouselsOverOrSelectedFill											
ObjectDarkColor											
DefaultColor											

Advanced Properties

In *Run-Dictionaries-Themes* and under the *Advanced* settings, you can customize the component properties.

When clicking on the advanced button from the theme tab, the advanced dialog box will open based on which theme you selected with the combobox.

It is important to notice that these properties will only be valid for the specific theme displayed in the Configuration Window (1).



By opening the advanced settings, you can easily access components such as text font, radio box marker, combo box marker, or components that are not colors or are not exposed in the drawing tool configuration.

In the example above, the customization is valid to TRadioButtons and all Ellipse. You can overwrite the basic color configuration by opening the Advanced Settings and typing the name of the property and value you desire. To filter for specific elements, you should use the **Uid** property to select a specific element.

To make sure the configuration you inserted is valid, always click on the **Check** button (2). A popup message will appear with a Success/Error message.

The **Export Properties** button (3) will export all properties that are available, for the selected object, to the clipboard. The user can see the properties by pasting them to a text editor application (e.g.: Notepad). Below you can find some of the exported properties for the Ellipse object.

```
* Type: System.Windows.Shapes.Ellipse
- Properties:
. Effect, System.Windows.Media.Effects.Effect
. Fill, System.Windows.Media.Brush
. Focusable, System.Boolean
. Height, System.Double
. UseLayoutRounding, System.Boolean
. VerticalAlignment, System.Windows.VerticalAlignment
. Visibility, System.Windows.Visibility
. Width, System.Double
```